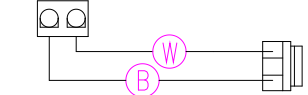
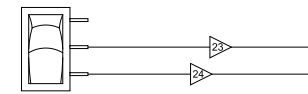


12V Light (White 2-Pin)



ON



OFF

SYSTEM FUSE

RED INDICATOR LIGHT

HIGH-LIMIT

RED INDICATOR LIGHT

PUMP 1 FUSE

RED INDICATOR LIGHT

PUMP 2 FUSE

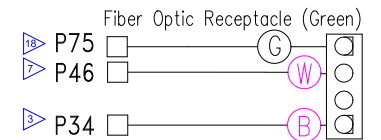
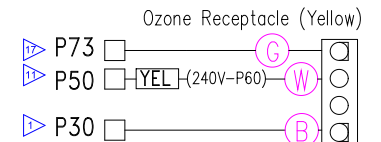
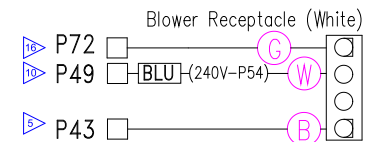
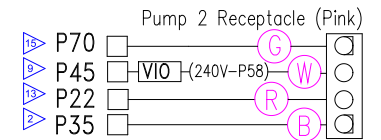
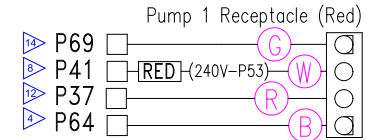
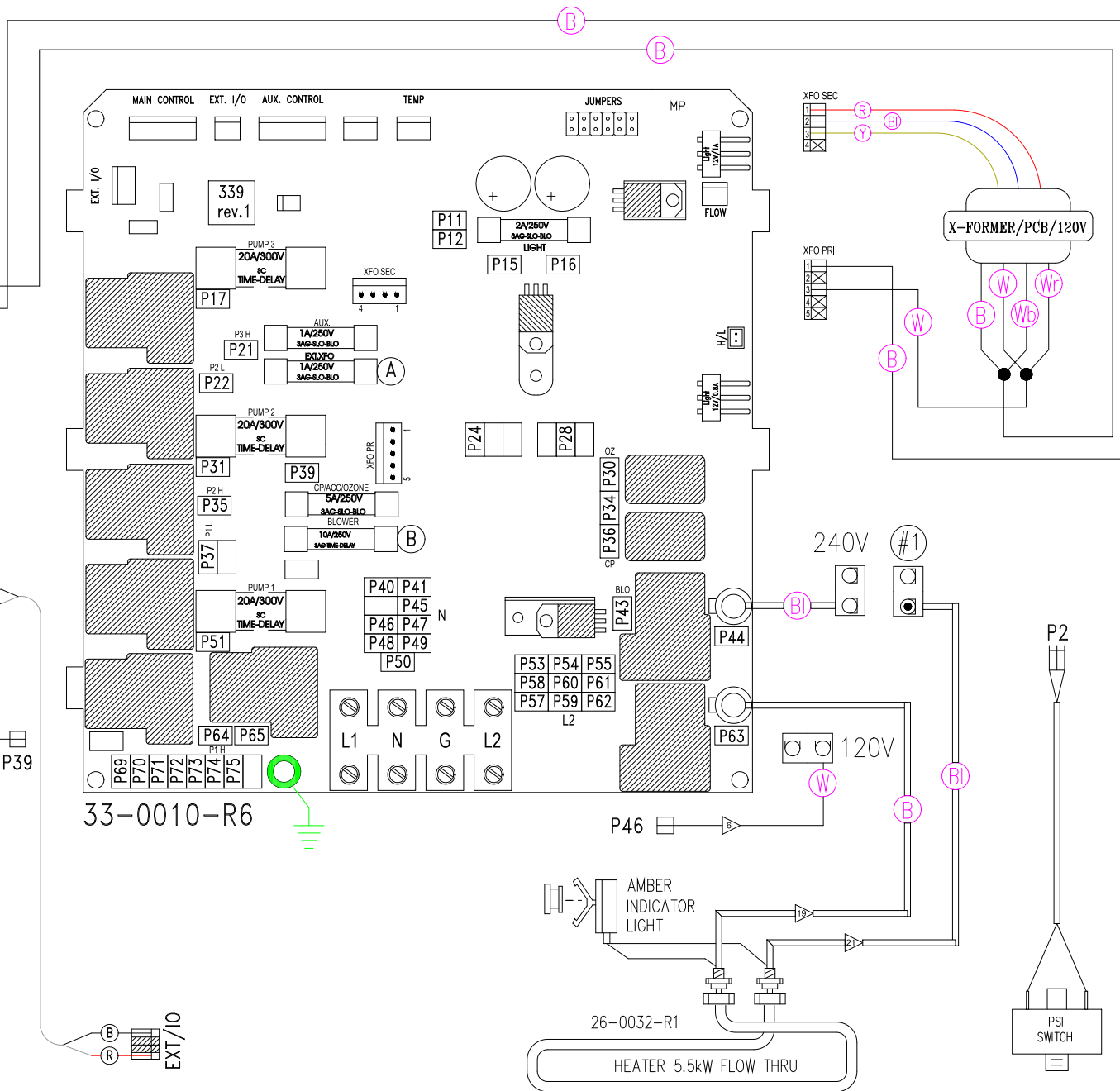
RED INDICATOR LIGHT

AIR BLOWER FUSE

RED INDICATOR LIGHT

OZON/CIRC. FUSE

RED INDICATOR LIGHT



HYDRO-QUIP
CORONA, CA (909) 273-7575

Manufacture Notes: EX: RED - DENOTES THE COLOR OF HEAT SHRINK USED.

Approved By:

Dwg. No. C221A0-DKPQY

Drawn BH Rev 10

Wire Color Code

For 120V Operation:

a) Install Heater plug (#1) into receptacle labeled 120V

For 240V Operation:

b) Install Heater plug (#1) into receptacle labeled 240V

Date 08.06.03

Diagram No. 4419

| | |
|------------|------------|
| B - Black | G - Green |
| Br - Brown | Bl - Blue |
| R - Red | V - Violet |
| O - Orange | W - White |
| Y - Yellow | Gr - Gray |